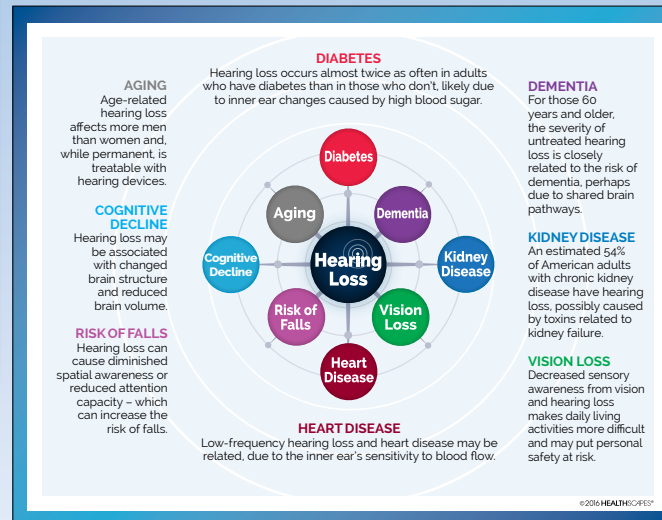




Front

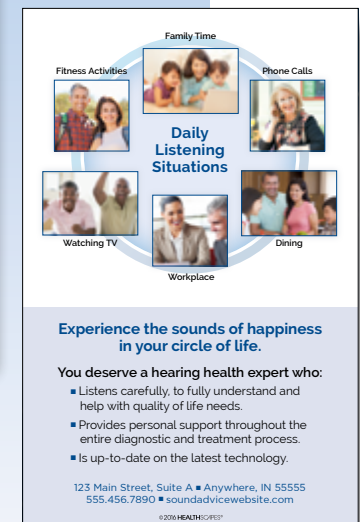


Open left front flap



Open both flaps – center spread

Brochure folds to 5.5" x 8.5"
Opens to 11" x 8.5"



Back

DID YOU KNOW?

Hearing health and your quality of life are closely related to many common medical conditions.

These include diabetes, dementia, kidney disease, vision loss, heart disease, risk of falls and cognitive decline.

We provide the wellness information patients need and personal touch they deserve.




Sound Advice
Hearing Aid Center

555.456.7890
soundadvice.com

Empowering People, Improving Lives

Front - flaps closed, 5.5" x 8.5"



Daily Listening Situations

Family Time

Phone Calls

Dining

Workplace

Watching TV

Fitness Activities

Experience the sounds of happiness in your circle of life.

You deserve a hearing health expert who:

- Listens carefully, to fully understand and help with quality of life needs.
- Provides personal support throughout the entire diagnostic and treatment process.
- Is up-to-date on the latest technology.

123 Main Street, Suite A ■ Anywhere, IN 55555
555.456.7890 ■ soundadvicewebsite.com

©2016 HEALTHSCAPES®

Back panel - 5.5" x 8.5"

AGING
Age-related hearing loss affects more men than women and, while permanent, is treatable with hearing devices.

COGNITIVE DECLINE
Hearing loss may be associated with changed brain structure and reduced brain volume.

RISK OF FALLS
Hearing loss can cause diminished spatial awareness or reduced attention capacity – which can increase the risk of falls.

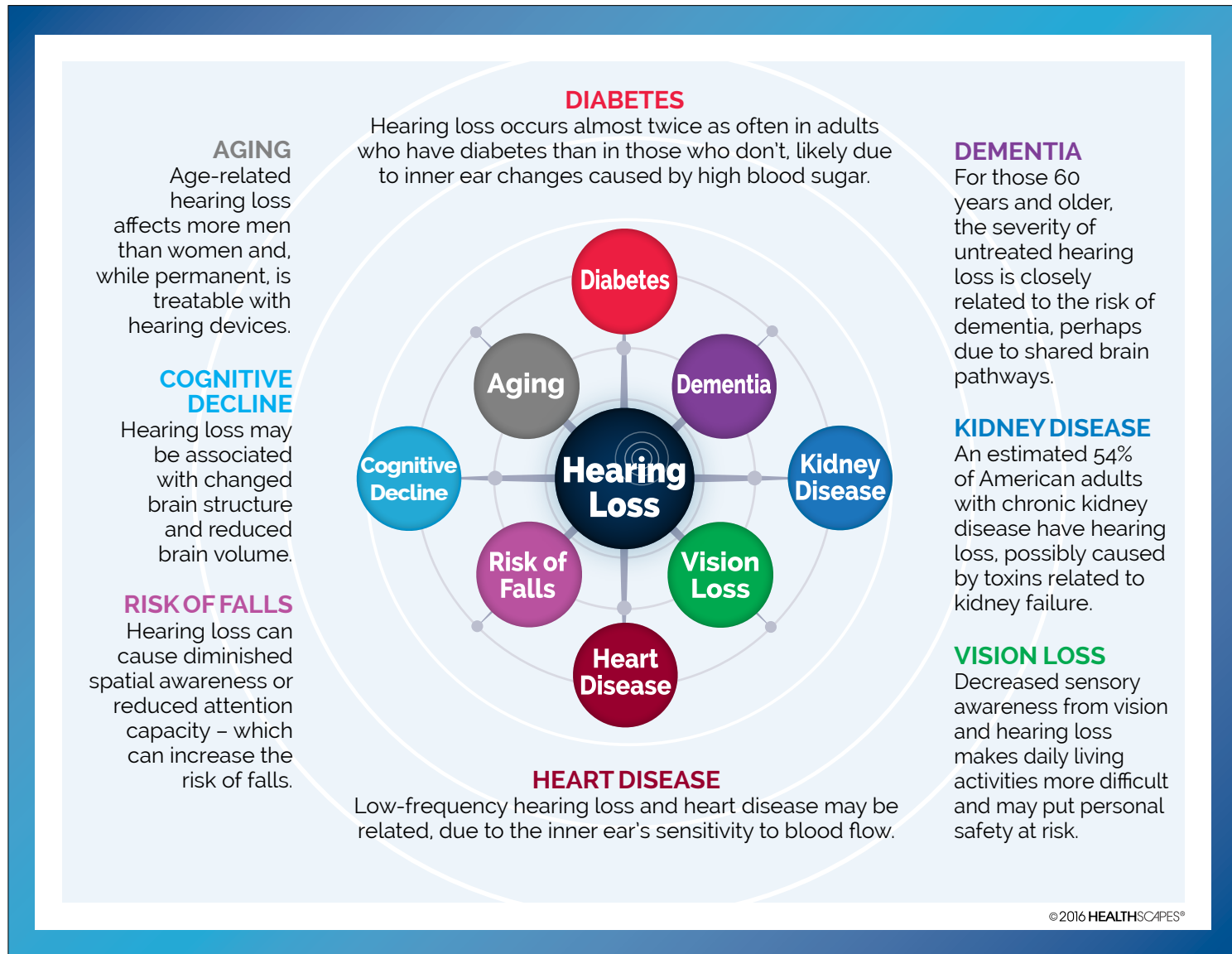
DIABETES
Hearing loss occurs almost twice as often in people who have diabetes than in those who do not, due to inner ear changes caused by blood sugar levels.

HEART DISEASE
Low-frequency hearing loss is often age-related, due to the inner ear.

Sound Advice
Hearing Aid Center
555.456.7890
soundadvice.com

Empowering People, Improving Lives

Left front flap open - insert in place



Center spread - both flaps open, 11" x 8.5"